

10.01.2025

Statistical Yearbook "International Accounts of the Republic of Moldova" 2023

[Statistical yearbook "International accounts of the Republic of Moldova" 2023](#) ^[1]

[Dashboard](#)

[2]

[Tables and charts](#)

[3]

[Annexes](#)

[4]

The statistical yearbook "International Accounts of the Republic of Moldova" 2023 presents an overview of the evolution of the international accounts (IA) indicators based on the definitive annual data, as well as multiple detailed analytical information on the evolution of the international accounts for the period 2019-2023, that are not included in the quarterly analytical materials, such as the Coordinated Direct Investment Survey and the Quarterly External Debt Statistics.

According to the final data, in 2023, the deficit of the current account of the balance of payments decreased by 23,7% compared to 2022 and amounted to US\$ 1 893,23 million or 11,4% relative to GDP. The evolution of the current account was determined by the decrease of the trade balance in goods (-6,2%), by the increases in the surpluses of the primary (+4,5 times) and secondary (+4,1%), while the surplus of the balance in services decreased (-1,5%)

The capital account recorded a surplus amounting to US\$ 81,85 million, the highest value in the last five years.

The financial account recorded a net capital inflow amounting to US\$ 1 651,43 million, as a result of net increase in residents' liabilities to non-residents by US\$ 827,25 million generated by actual transactions, and net decrease in residents' external financial assets by US\$ 824,18 million.

BALANCE OF PAYMENTS

in 2023

The decrease in trade in goods balance determined the decline of **current account** deficit.

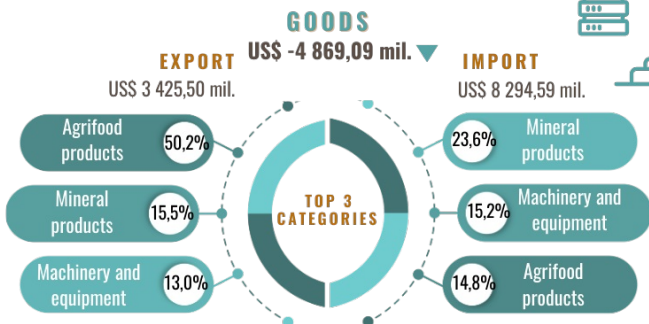
CURRENT ACCOUNT
US\$ -1 893,23 mil. ▼
 -11,4% / GDP

CAPITAL ACCOUNT
US\$ 81,85 mil. ▲

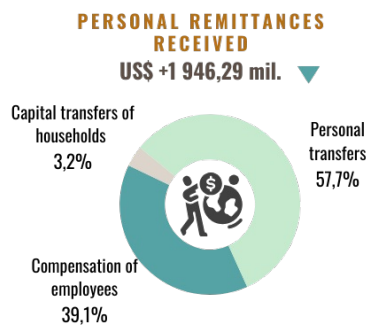
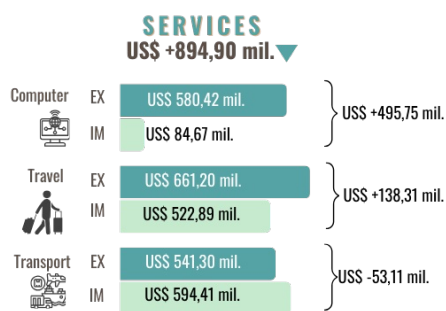
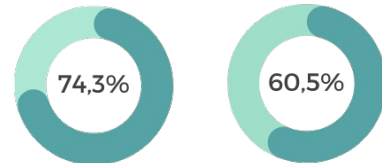


FINANCIAL ACCOUNT
 net inflows
US\$ -1 651,43 mil.

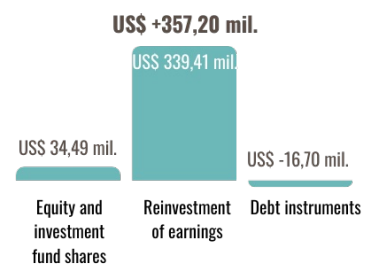
Currency and deposits, loans and direct investment were the main **financing sources** of the current account deficit.



LOANS
 (net incurrence of liabilities)
 Drawings US\$ 1 293,75 mil.
 Repayments US\$ 817,61 mil.
 of which of **general government**:



DIRECT INVESTMENT
 (net incurrence of liabilities)
US\$ +357,20 mil.



▲ ▼ - increase / decrease compared to the situation at the end of the previous year

[5]

The international investment position of the Republic of Moldova as of 12/31/2023, amounted to US\$ -5 960,70 million (or 36,0% relative to GDP), the negative balance decreasing by 3,9% compared to the end of 2022.

INTERNATIONAL INVESTMENT POSITION

as of 12/31/2023



ASSETS
US\$ 7 769,48 ▲
mil.

LIABILITIES
US\$ 13 730,18 ▲
mil.

NET
US\$ -5 960,70 ▼
mil.

56,9%

43,1%

80,4% — long-term

19,6% — short-term

The net international investment position decreased and relative to GDP accounted for -36,0%

56,6%

External assets position / external liabilities position

39,8%

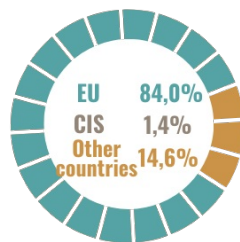
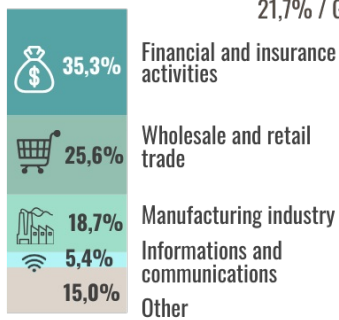
Foreign direct investment / external liabilities position

39,8%

Loans / external liabilities position

DIRECT INVESTMENT - ACCUMULATED EQUITY

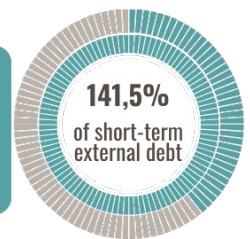
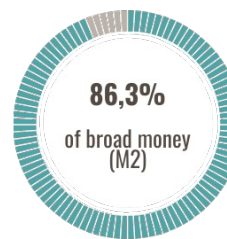
US\$ 3 588,51 mil. ▲
21,7% / GDP



RESERVE ASSETS

US\$ 5 453,13 mil. ▲

enough to cover:



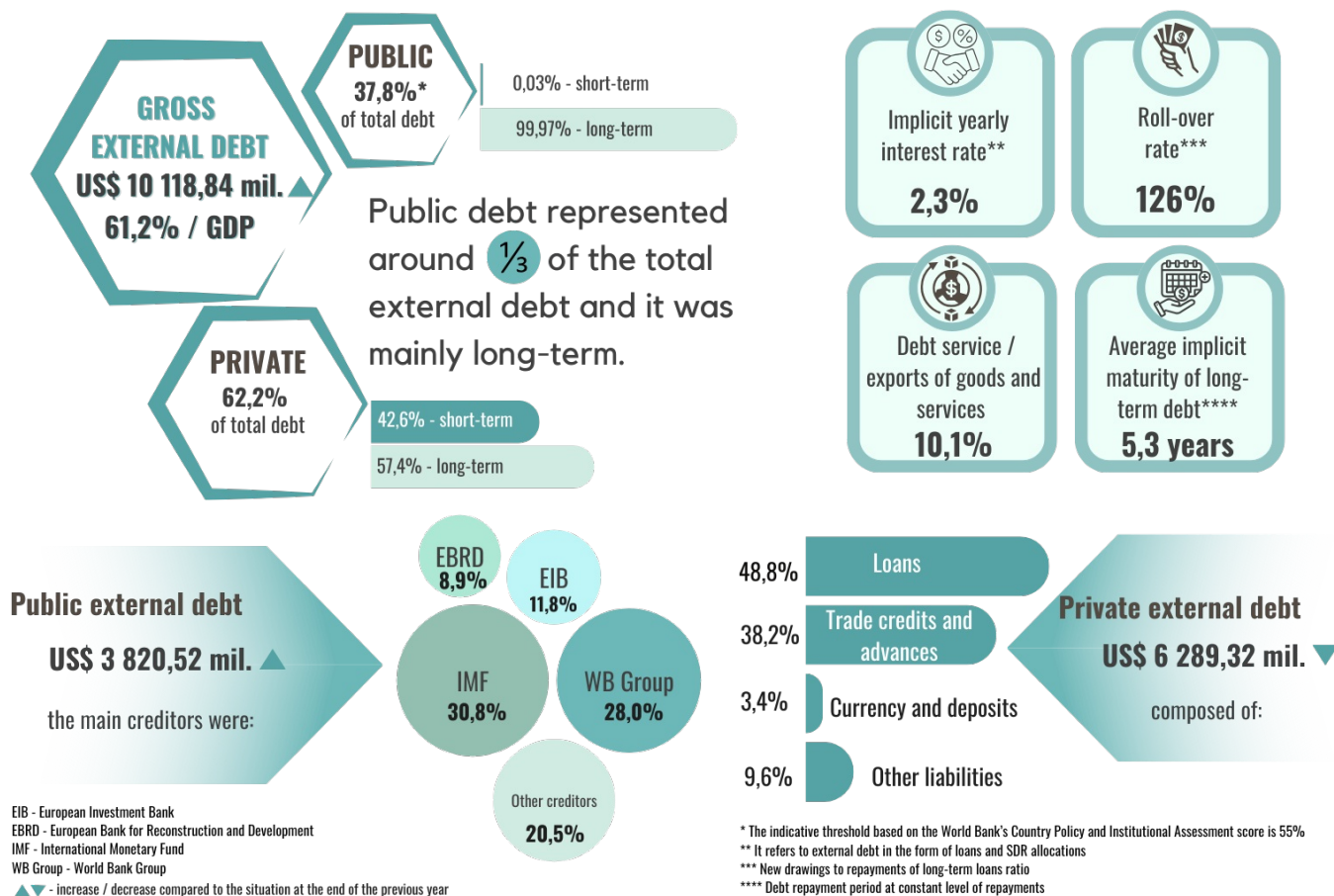
▲ ▼ - increase / decrease compared to the situation at the end of the previous year

[6]

The gross external debt of the Republic of Moldova increased by 5,7% during 2023 and amounted to US\$ 10 118,84 million, which is 61,2 to GDP.

EXTERNAL DEBT

as of 12/31/2023



[7]

Vezi și

Tag-uri

[Balanța de Plăți](#) [8]

[Datoria Externă](#) [9]

[Poziția Investițională Internațională](#) [10]

[statistica](#) [11]

[evoluția conturilor internaționale](#) [12]

Sursa URL:

<http://bnm.md/ro/node/68129>

Legături conexe:

[1] http://bnm.md/files/01_Yearbook_2023_1.pdf [2] http://bnm.md/files/Dashboard_2023_en.xlsx [3]

http://bnm.md/files/02_Tables_and_charts_2023.xlsx [4] http://bnm.md/files/03_Annexes_2023.xlsx [5]

<http://bnm.md/files/BOP.png> [6] <http://bnm.md/files/IIP.png> [7] <http://bnm.md/files/ED.png> [8] [http://bnm.md/ro/search?hashtags\[0\]=Balanța de Plăți](http://bnm.md/ro/search?hashtags[0]=Balanța de Plăți) [9]

[http://bnm.md/ro/search?hashtags\[0\]=Datoria Externă](http://bnm.md/ro/search?hashtags[0]=Datoria Externă) [10] [http://bnm.md/ro/search?hashtags\[0\]=Poziția Investițională Internațională](http://bnm.md/ro/search?hashtags[0]=Poziția Investițională Internațională) [11]

[http://bnm.md/ro/search?hashtags\[0\]=statistica](http://bnm.md/ro/search?hashtags[0]=statistica) [12]

[http://bnm.md/ro/search?hashtags\[0\]=evoluția conturilor internaționale](http://bnm.md/ro/search?hashtags[0]=evoluția conturilor internaționale)